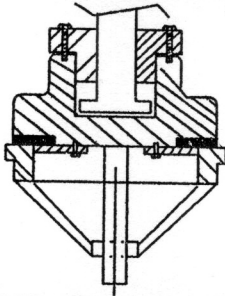
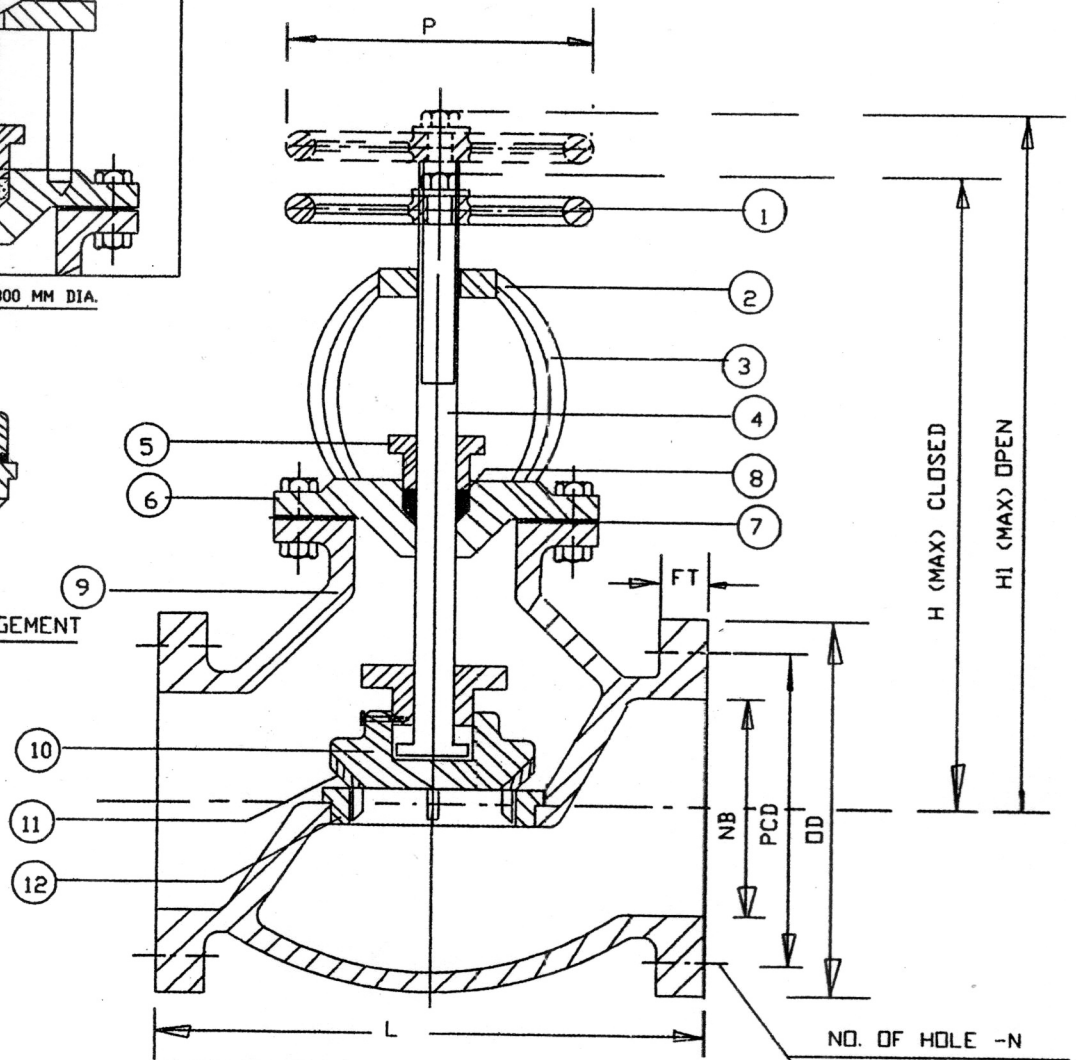


FOR 200 MM. TO 300 MM DIA.



RUBBER SEAT ARRANGEMENT



NO. OF HOLE -N

DIA OF HOLE - ϕ

SL.NO.	DESCRIPTION	QTY. PER SET	MATERIAL	SPECIFICATION
12	BODY RING	1	STAINLESS STEEL	IS-6603/04CR18NI10 OR EQUIVALENT
11	DISC RING	1	STAINLESS STEEL	IS-6603/04CR18NI10 OR EQUIVALENT
10	DISC	1	CAST IRON	IS-210GR.FG-200
9	BODY	1	CAST IRON	IS-210GR.FG-200
8	PACKING	-	HEMP+GREASED	IS-5414
7	GASKET	-	RUBBER	IS-638 TYPE-B
6	COVER	1	CAST IRON	IS-210GR.FG-200
5	GLAND	1	CAST IRON	IS-210GR.FG-200
4	SPINDLE	1	STAINLESS STEEL	IS-6603/20CR13 OR EQUIVALENT
3	YOKE/PILLER	1	CAST IRON	IS-210GR.FG-200
2	BRIDGE	1	CAST IRON	IS-210GR.FG-200
1	HAND WHEEL	1	CAST IRON	IS-210GR.FG-200

PARTS LIST

SL.NO.	NB	L ±2	H	DD	PCD	FT	N	Ø	BODY SEAT	QTY.	NO.	P	H1
11	300	699	800	445	400	27.5	12	23	15	10		400	850
10	250	622	755	395	350	26	12	23	15	10		400	790
9	200	495	595	340	295	24.5	8	23	15	10		350	650
8	150	406	450	285	240	23	8	23	15	10		325	490
7	125	356	425	250	210	22.5	8	19	15	10		225	455
6	100	292	395	220	180	22	8	19	15	10		225	425
5	80	241	330	200	160	21	4	19	15	10		180	345
4	65	216	290	185	145	16	4	19	15	10		180	310
3	50	203	275	165	125	16	4	19	15	10		180	290
2	40	165	240	150	110	16	4	18	15	10		125	260
1	25	140	235	115	85	16	4	14	15	10		120	250

VALVE DETAILS

2 TYPE OF VALVE. _____ STRAIGHT TYPE
 1 DESIGN CODE : _____ ASA CLASS-150

NOTES

ALL DIMENSIONS ARE IN MM. UNLESS STATED OTHERWISE

FLANGE DRILLING STD. IS: 1538 OR AS PER CUSTOMER ORDER

FILE NAME :STGV15M

THIS DRAWING IS THE PROPERTY OF CALSENS PVT. LTD. KOLKATA.

IT MUST NOT BE COPIED, LOANED OR USED OTHERWISE, THAN FOR THE INSTLLATION OR USE BY APPROVED VENDORS.

CLINTS NAME:

OUR JOB NO.-

CALSSENS PRIVATE LTD. KOLKATA

TITLE: **CAST IRON DOUBLE FLANGE GLOBE VALVE**

DRAWN S.S.G 23.06.10 SCALE : N.T.S.

CHECKED B.P.B

APPROVED A.S.D

DRG. NO. CPL.- 900043

REV.0