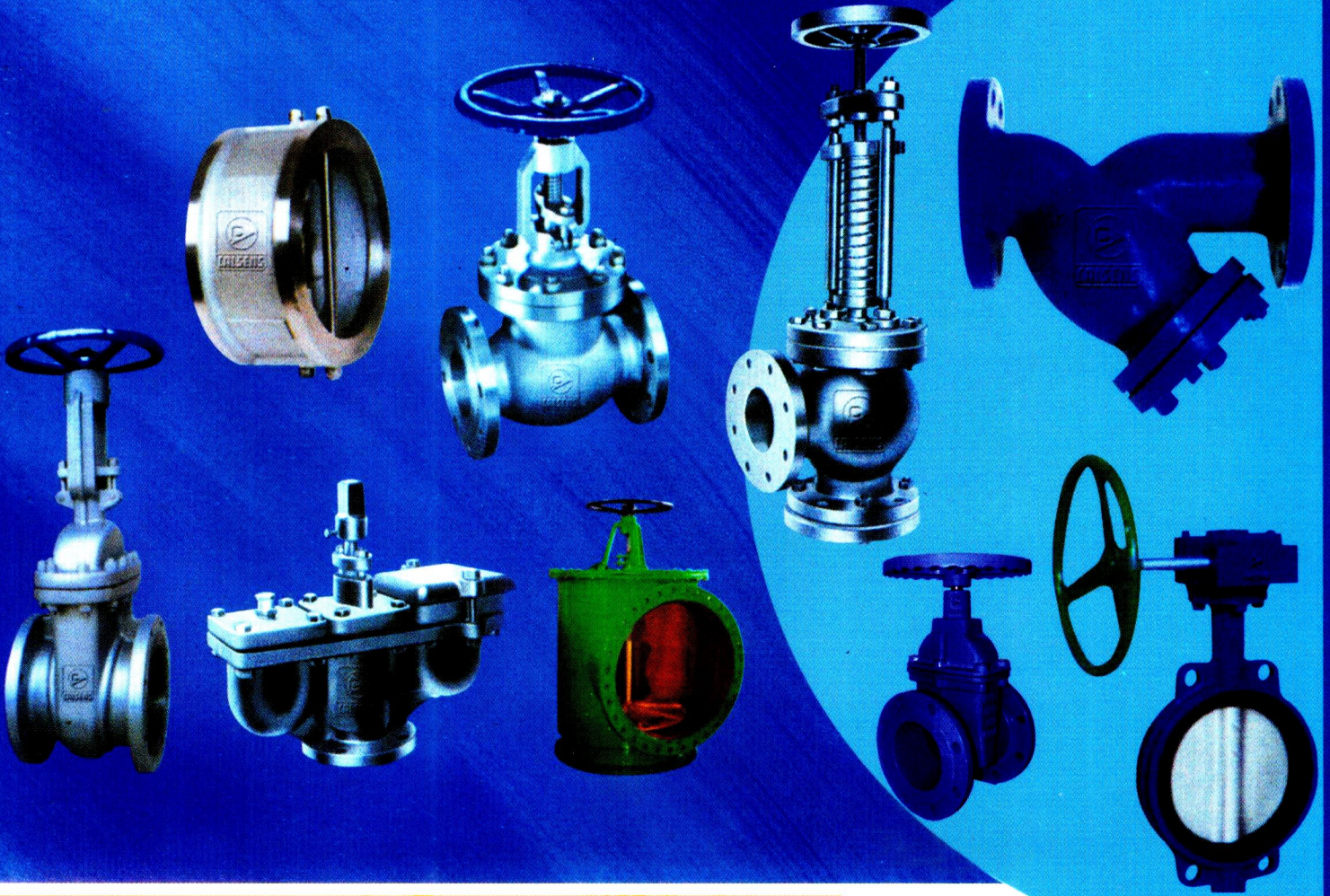
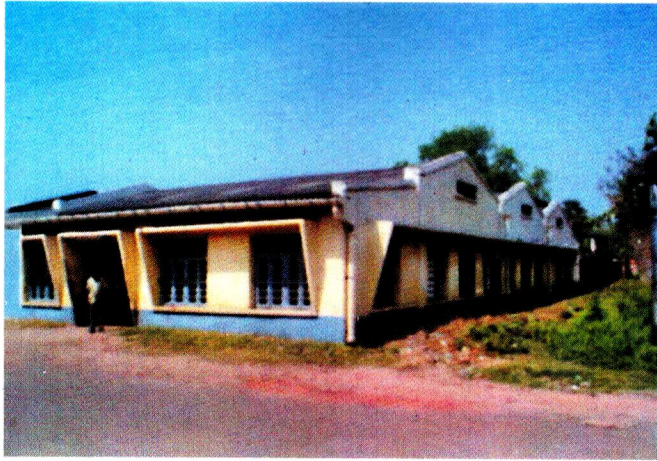




# PRODUCT PROFILE



CALSENS PRIVATE LIMITED



# COMPANY PROFILE



CALSENS PRIVATE LIMITED is engaged in the business of valve manufacturing. It produces valves for multivarious uses. The company supplies its products to various renowned organisations; the major customers being in Sugar Industry, Water Works, Irrigation, Sewage and Steel industries. The office is located at Calcutta's main office area i.e., at Dalhousie square and the two manufacturing units are located in the renowned industrial location at Howrah, West Bengal, India.

This company was formed in 1971. The expertise on the products manufactured is long and proven in the market. An experienced and competent team of employees run the organization, who are thoroughly conversant with the product requirements. The company keeps a close liaison with the customers for any suggestion / improvement necessary on the products.

The company from its very inception, has given very high priority on the quality of the products. Strict maintenance of product standard is always ensured. Customer feedback is a major source for up gradation of products. The testing of products is done under strict vigilance and no compromise on quality of functioning is tolerated. Valves are also tested by the customer's representatives and third party inspection agencies, when required, who carries out inspection at the works itself.

Calsens Valves are manufactured under strict quality control generally as per Indian Standards (IS) wherever applicable. However valves are also manufactured as per British Standards (BS) if required by the customer. Valves can be supplied with Electric Actuators / Gear arrangements / Chain Wheel / Head Stock / Bypass / Dashpot / Locking arrangement etc. as per specific customer requirements or customer drawings.

- An ISO 9001 : 2015, ISO 14001 : 2015 & ISO : 45001 : 2018 Certified Company (IMS)
- Over five decades experience in supply of Valves for Industrial and Water Works Applications
- Wide Product Range for various applications of water works / irrigation / sugar factories etc.
- Market leader in supply of valves to Sugar Industry in India and abroad
- Over 100,000 valves in operation
- Prompt after-sales support at site
- Valves are offered to third party inspection agencies like, LLOYDS, SGS, Avant-Garde, EIL, Dr. Amin Controllers etc.

# PRODUCT Profile



## GATE/SLUICE VALVES



Type	: Rising / Non-Rising Spindle
Details of Application	: Steam / Vapour / Juice / Water etc
Size Range (dia)	: 20 mm to 1500 mm
Material of Construction	: Cast Iron / Cast Steel / MS Fabricated / Ductile Iron
Internals	: Stainless Steel / Leaded Bronze
Accessories	: Gear, Position Indicator, Headstock, Electric Actuators, Bypass, Back Seat, Thrust Bearing, Shoe Channel

## BUTTERFLY VALVES



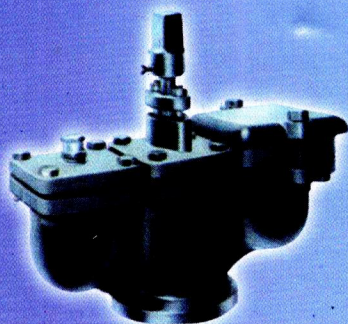
Type	: Double Flanged / Wafer
Details of Application	: Juice / Water
Size Range (dia)	: 50 mm to 2000 mm
Material of Construction	: Cast Iron / Cast Steel / Ductile Iron
Internals	: Stainless Steel / Rubber
Accessories	: Gear, Electrical Actuator

## NON-RETURN/CHECK VALVES



Type	: Single / Multi Door / Dual Plate Type / Wafer
Details of Application	: Water, Exhaust / Vapour, Juice, Syrup, Molasses etc.
Size Range (dia)	: 50 mm to 2000 mm
Material of Construction	: Cast Iron / Cast Steel / Fabricated
Internals	: Stainless Steel / Leaded Bronze / Rubber
Accessories	: Dashpot, Counter Weight, Bypass

## AIR RELEASE VALVES



Type	: Double / Single / Kinetic / Tamper Proof
Details of Application	: Water
Size Range (dia)	: 20 mm to 250 mm
Material of Construction	: Cast Iron
Internals	: Stainless Steel / Leaded Bronze

# PRODUCT Profile



## GATE VALVE - RESILIENT SEATED



- Type : Ductile Iron-Gate Valve Resilient Seated, Design in general to BS5163/DINF4
- Details of Application : Water etc.
- Size Range (dia) : 40 mm to 600 mm
- Material of Construction : Wedge encapsulated with EPDM Rubber
- Features : Glandless design, Fusion Bonded Epoxy Coating Triple 'O' Ring Seal, Pocketless full clear Bore

## KINETIC AIR VALVE



- Type : Tamper Proof Kinetic Air Valve
- Details of Application : Water lines of Pumping Station / Distribution Network etc.
- Size Range (dia) : DN 40 to 300 mm
- Material of Construction : Ductile Iron / Cast Iron
- Features : Stainless Steel Floats, Shell means zero maintenance. Epoxy Powder coating

## GLOBE VALVES



- Type : Right Angle / Straight Flow / Oblique Type
- Details of Application : Water, Exhaust / Vapour, Juice. Syrup etc.
- Size Range (dia) : 20 mm to 500 mm
- Material of Construction : Cast Iron / Cast Steel / MS Fabricated
- Internals : Stainless Steel / Rubber
- Accessories : Gear, Position Indicator, Electrical Actuator

## FOOT VALVES



- Type : Single Door / Multi Door
- Details of Application : Pump Line
- Size Range (dia) : 50 mm to 600 mm
- Material of Construction : Cast Iron / Cast Steel
- Internals : Leaded Bronze / Rubber / Leather/SS

# PRODUCT Profile



## DOUBLE BEAT VALVES



Details of Application : Juice Heaters  
Size Range (dia) : 100 mm to 300 mm  
Material of Construction : Cast Iron / MS Fabricated /  
SS Fabricated  
Internals : Stainless Steel / Rubber

## RIGHT ANGLE / STRAIGHT FLOW VALVES



Type : MS Fabricated / Cast Iron (upto 500 mm)  
Details of Application : Vapour, Exhaust, Juice etc  
Size Range (dia) : 40 mm to 1500 mm  
Material of Construction : MS Fabricated / Cast Iron  
Internals : Stainless Steel / Leaded Bronze / Rubber  
Accessories : Gear, Electrical Actuator, Thrust Bearing

## STRAINER



Type : 'Y' Type / Bucket Type  
Details of Application : Straining of Turbid liquid  
Size Range (dia) : 25 mm to 700 mm  
Material of Construction : Cast Iron / Cast Steel / MS Fabricated  
Internals : Stainless Steel / Bronze

## PRESSURE RELIEF VALVES



Type : Spring Loaded / Dead Weight  
Details of Application : Steam / Vapour  
Size Range (dia) : 50 mm to 300 mm  
Material of Construction : Cast Iron / Cast Steel / MS Fabricated  
Internals : Stainless Steel

# PRODUCT Profile



## DIAPHRAGM VALVES



**Details of Application** : Water/Gas/Acid other corrosive Material  
**Size Range (dia)** : 40 mm to 200 mm  
**Material of Construction** : Cast Iron  
**Internals** : EPDM / NITRILE Rubber, Stainless Steel, Lead Tin Bronze  
**Lining** : Rubber / Glass / Without

## PULP VALVES



**Details of Application** : Pulp / Fibrous material  
**Size Range (dia)** : 50 mm to 500 mm  
**Material of Construction** : Cast Iron / Cast Steel / MS fabricated  
**Internals** : Stainless Steel



## Calsens Private Limited

An ISO 9001 : 2015, ISO 14001 : 2015 & ISO : 45001 : 2018 Certified Company (IMS)

6/1A, British Indian Street, Kolkata 700 069, India. Phone : (91)(33) 2248 6527

e-mail : ho@calsens.com • Website : www.calsens.com

Offices / Dealers at :

Chennai • Bhubaneswar • Mumbai • Pune • Hyderabad • Rourkela • Ranchi • Surat • New Delhi • Uttarakhand